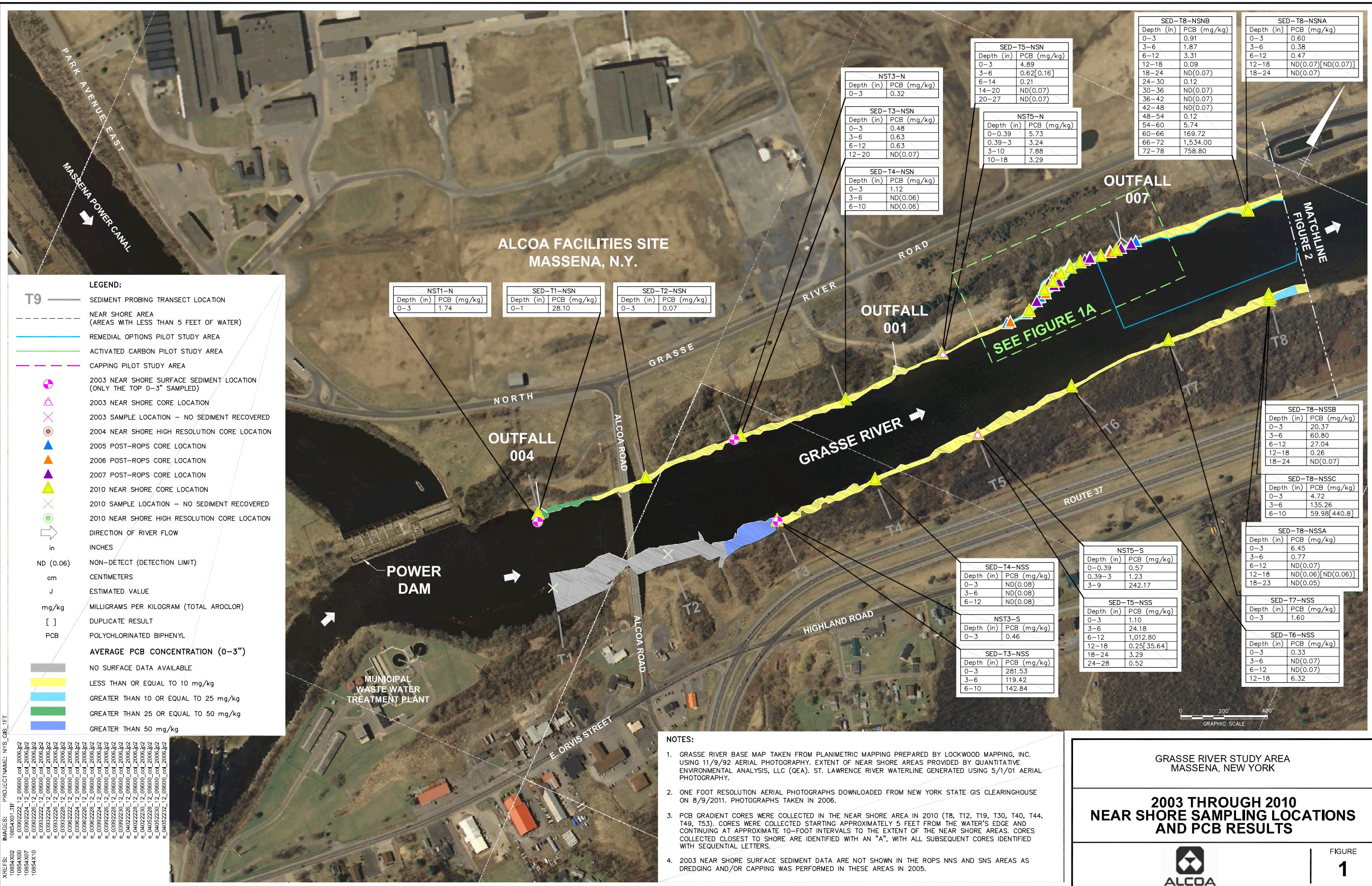


CITY: SYRACUSE, NY DM\GROUP: ENVCAD DB: L:\POSEMAUER K.DAVIS L.FORAKER LD:L. POSEMAUER PIC: H.VANDEWALKER PIN: H.VANDEWALKER TMS: S.HILL LYR: ON; OFF=REF
 GAENV\CAD\SYRACUSE\ENVCAD\B00108540000000010\DWG\NEAR SHORE AERIAL\PCB\10854001.dwg LAYOUT: 1. SAVED: 9/7/2011 11:33:35 AM ACADVER: 18.1 S (LMS TECH) PLOTSETUP: C:\D2B-PDF-AERIAL PLOTSTYLETABLE: PLT\FULL.CTB PLOTTED: 9/7/2011 1:34 AM BY: FORAKER, LYDIA



LEGEND:

- T9 — SEDIMENT PROBING TRANSECT LOCATION
- - - NEAR SHORE AREA (AREAS WITH LESS THAN 5 FEET OF WATER)
- REMEDIAL OPTIONS PILOT STUDY AREA
- ACTIVATED CARBON PILOT STUDY AREA
- - - CAPPING PILOT STUDY AREA
- 2003 NEAR SHORE SURFACE SEDIMENT LOCATION (ONLY THE TOP 0-3" SAMPLED)
- △ 2003 NEAR SHORE CORE LOCATION
- × 2003 SAMPLE LOCATION - NO SEDIMENT RECOVERED
- 2004 NEAR SHORE HIGH RESOLUTION CORE LOCATION
- ▲ 2005 POST-ROPS CORE LOCATION
- ▲ 2006 POST-ROPS CORE LOCATION
- ▲ 2007 POST-ROPS CORE LOCATION
- ▲ 2010 NEAR SHORE CORE LOCATION
- × 2010 SAMPLE LOCATION - NO SEDIMENT RECOVERED
- 2010 NEAR SHORE HIGH RESOLUTION CORE LOCATION
- DIRECTION OF RIVER FLOW
- in INCHES
- cm CENTIMETERS
- J ESTIMATED VALUE
- mg/kg MILLIGRAMS PER KILOGRAM (TOTAL AROCLOR)
- [] DUPLICATE RESULT
- PCB POLYCHLORINATED BIPHENYL

AVERAGE PCB CONCENTRATION (0-3")

- NO SURFACE DATA AVAILABLE
- LESS THAN OR EQUAL TO 10 mg/kg
- GREATER THAN 10 OR EQUAL TO 25 mg/kg
- GREATER THAN 25 OR EQUAL TO 50 mg/kg
- GREATER THAN 50 mg/kg

REFERENCES:
 10854X02
 10854X00
 10854X07
 10854X10

PROJECT NAME: NYS_OIS_1.FIT

10854X01_11F
 e_03902222_12_09600_cod_20064p2
 e_03902224_12_09600_cod_20064p2
 e_03902225_12_09600_cod_20064p2
 e_03902226_12_09600_cod_20064p2
 e_03902227_12_09600_cod_20064p2
 e_03902228_12_09600_cod_20064p2
 e_03902229_12_09600_cod_20064p2
 e_03902230_12_09600_cod_20064p2
 e_03902231_12_09600_cod_20064p2
 e_03902232_12_09600_cod_20064p2
 e_03902233_12_09600_cod_20064p2
 e_03902234_12_09600_cod_20064p2
 e_03902235_12_09600_cod_20064p2
 e_03902236_12_09600_cod_20064p2
 e_03902237_12_09600_cod_20064p2
 e_03902238_12_09600_cod_20064p2
 e_03902239_12_09600_cod_20064p2
 e_03902240_12_09600_cod_20064p2
 e_04402228_12_09600_cod_20064p2
 e_04402230_12_09600_cod_20064p2
 e_04402231_12_09600_cod_20064p2
 e_04402232_12_09600_cod_20064p2
 e_04402233_12_09600_cod_20064p2
 e_04402234_12_09600_cod_20064p2
 e_04402235_12_09600_cod_20064p2
 e_04402236_12_09600_cod_20064p2
 e_04402237_12_09600_cod_20064p2
 e_04402238_12_09600_cod_20064p2
 e_04402239_12_09600_cod_20064p2
 e_04402240_12_09600_cod_20064p2

- NOTES:**
- GRASSE RIVER BASE MAP TAKEN FROM PLANIMETRIC MAPPING PREPARED BY LOCKWOOD MAPPING, INC. USING 11/9/92 AERIAL PHOTOGRAPHY. EXTENT OF NEAR SHORE AREAS PROVIDED BY QUANTITATIVE ENVIRONMENTAL ANALYSIS, LLC (QEA). ST. LAWRENCE RIVER WATERLINE GENERATED USING 5/1/01 AERIAL PHOTOGRAPHY.
 - ONE FOOT RESOLUTION AERIAL PHOTOGRAPHS DOWNLOADED FROM NEW YORK STATE GIS CLEARINGHOUSE ON 8/9/2011. PHOTOGRAPHS TAKEN IN 2006.
 - PCB GRADIENT CORES WERE COLLECTED IN THE NEAR SHORE AREA IN 2010 (T8, T12, T19, T30, T40, T44, T49, T53). CORES WERE COLLECTED STARTING APPROXIMATELY 5 FEET FROM THE WATER'S EDGE AND CONTINUING AT APPROXIMATE 10-FOOT INTERVALS TO THE EXTENT OF THE NEAR SHORE AREAS. CORES COLLECTED CLOSEST TO SHORE ARE IDENTIFIED WITH AN "A", WITH ALL SUBSEQUENT CORES IDENTIFIED WITH SEQUENTIAL LETTERS.
 - 2003 NEAR SHORE SURFACE SEDIMENT DATA ARE NOT SHOWN IN THE ROPS NNS AND SNS AREAS AS DREDGING AND/OR CAPPING WAS PERFORMED IN THESE AREAS IN 2005.

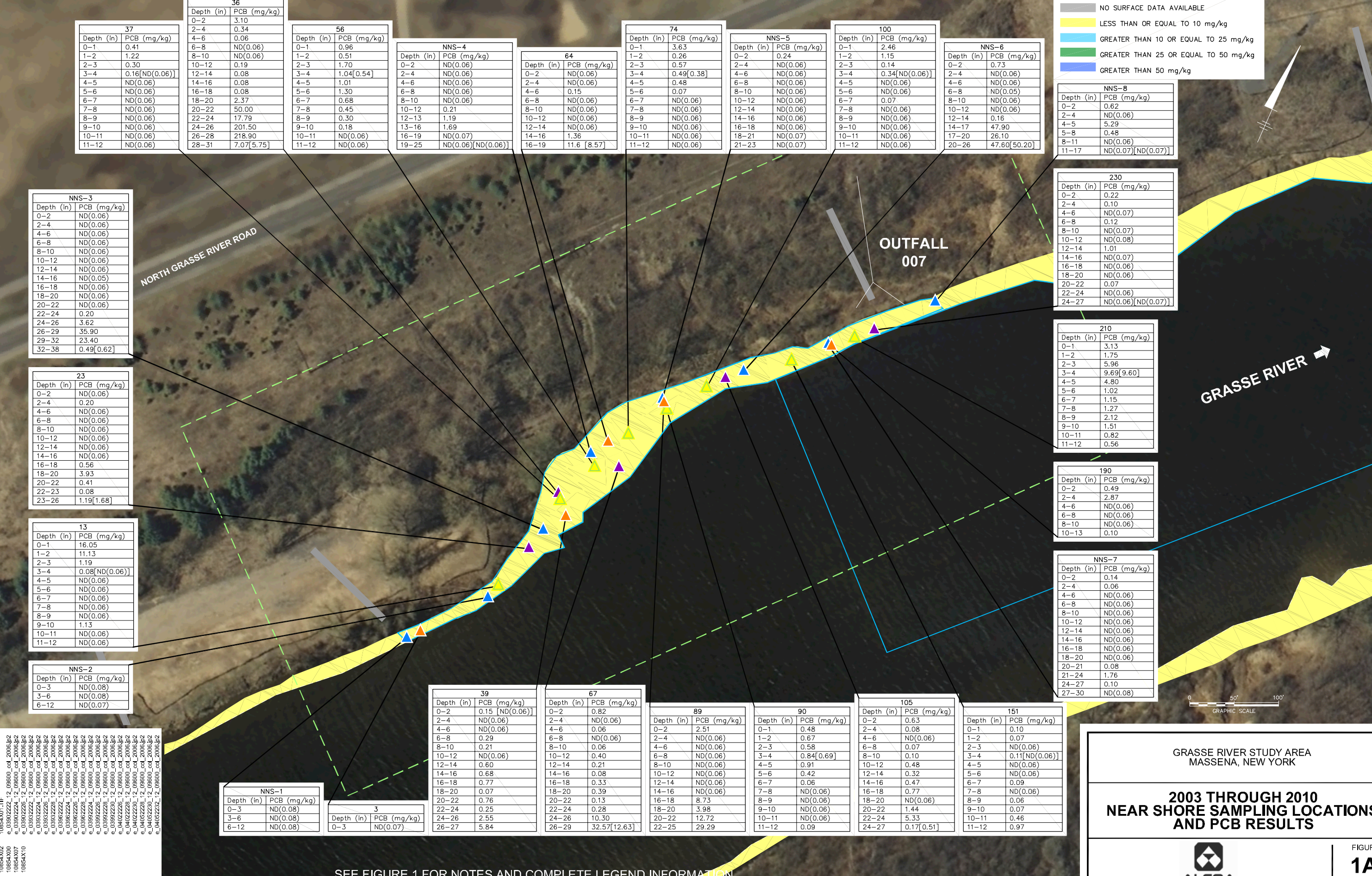
GRASSE RIVER STUDY AREA
 MASSENA, NEW YORK

**2003 THROUGH 2010
 NEAR SHORE SAMPLING LOCATIONS
 AND PCB RESULTS**

ALCOA

FIGURE
1

CITY: SYRACUSE, NY; COUNTY: DECATUR; ENVIRONMENTAL DATA CENTER (EDC) NUMBER: 10854X01; PROJECT NAME: NYCS GIS 1FT; CLIENT: ALCOA; PREPARED BY: LYNN M. VANDERKAMER; DATE: 9/11/2011 11:45 AM; PLOTTED BY: FORAKER, LYDIA



37			36			56			NNS-4			64			74			NNS-5			100			NNS-6		
Depth (in)	PCB (mg/kg)		Depth (in)	PCB (mg/kg)		Depth (in)	PCB (mg/kg)		Depth (in)	PCB (mg/kg)		Depth (in)	PCB (mg/kg)		Depth (in)	PCB (mg/kg)		Depth (in)	PCB (mg/kg)		Depth (in)	PCB (mg/kg)		Depth (in)	PCB (mg/kg)	
0-1	0.41		0-2	3.10		0-1	0.96		0-2	ND(0.06)		0-2	0.26		0-1	3.63		0-2	0.24		0-1	2.46		0-2	0.73	
1-2	1.22		2-4	0.34		2-3	0.51		2-4	ND(0.06)		2-3	0.57		1-2	0.26		2-4	ND(0.06)		1-2	1.15		2-4	ND(0.06)	
2-3	0.30		6-8	ND(0.06)		4-5	1.70		2-4	ND(0.06)		4-5	1.04[0.54]		2-3	0.30		4-6	ND(0.06)		2-3	0.14		6-8	ND(0.06)	
3-4	0.16[ND(0.06)]		8-10	ND(0.06)		6-7	0.68		4-6	ND(0.06)		6-8	ND(0.06)		3-4	0.16[ND(0.06)]		8-10	ND(0.06)		3-4	0.34[ND(0.06)]		8-10	ND(0.06)	
4-5	ND(0.06)		14-16	0.08		7-8	0.45		6-8	ND(0.06)		8-10	ND(0.06)		4-5	0.48		10-12	ND(0.06)		4-5	ND(0.06)		14-16	0.16	
5-6	ND(0.06)		16-18	0.08		8-9	0.30		8-10	ND(0.06)		8-10	0.15		5-6	0.07		12-14	ND(0.06)		5-6	ND(0.06)		16-18	ND(0.05)	
6-7	ND(0.06)		18-20	2.37		9-10	0.18		10-12	ND(0.06)		6-7	ND(0.06)		6-7	ND(0.06)		14-16	ND(0.06)		6-7	0.07		18-20	ND(0.06)	
7-8	ND(0.06)		20-22	50.00		10-11	ND(0.06)		12-13	1.19		8-9	ND(0.06)		7-8	ND(0.06)		16-18	ND(0.06)		7-8	ND(0.06)		20-22	ND(0.06)	
8-9	ND(0.06)		22-24	17.79		11-12	ND(0.06)		13-16	1.69		9-10	ND(0.06)		8-9	ND(0.06)		18-21	ND(0.07)		8-9	ND(0.06)		22-24	ND(0.06)	
9-10	ND(0.06)		24-26	201.50					16-19	ND(0.07)		10-11	ND(0.06)		9-10	ND(0.06)					9-10	ND(0.06)		24-26	218.90	
10-11	ND(0.06)		26-28	218.90					19-25	ND(0.06)		11-12	ND(0.06)		10-11	ND(0.06)					10-11	ND(0.06)		28-31	7.07[5.75]	
11-12	ND(0.06)		28-31	7.07[5.75]					16-19	11.6 [8.57]		11-12	ND(0.06)		11-12	ND(0.06)					11-12	ND(0.06)				

AVERAGE PCB CONCENTRATION (0-3")

- NO SURFACE DATA AVAILABLE
- LESS THAN OR EQUAL TO 10 mg/kg
- GREATER THAN 10 OR EQUAL TO 25 mg/kg
- GREATER THAN 25 OR EQUAL TO 50 mg/kg
- GREATER THAN 50 mg/kg

NNS-8	
Depth (in)	PCB (mg/kg)
0-2	0.62
2-4	ND(0.06)
4-5	5.29
5-8	0.48
8-11	ND(0.06)
11-17	ND(0.07)[ND(0.07)]

230	
Depth (in)	PCB (mg/kg)
0-2	0.22
2-4	0.10
4-6	ND(0.07)
6-8	0.12
8-10	ND(0.07)
10-12	ND(0.08)
12-14	1.01
14-16	ND(0.07)
16-18	ND(0.06)
18-20	ND(0.06)
20-22	0.07
22-24	ND(0.06)
24-27	ND(0.06)[ND(0.07)]

210	
Depth (in)	PCB (mg/kg)
0-1	3.13
1-2	1.75
2-3	5.96
3-4	9.69[9.60]
4-5	4.80
5-6	1.02
6-7	1.15
7-8	1.27
8-9	2.12
9-10	1.51
10-11	0.82
11-12	0.56

190	
Depth (in)	PCB (mg/kg)
0-2	0.49
2-4	2.87
4-6	ND(0.06)
6-8	ND(0.06)
8-10	ND(0.06)
10-13	0.10

NNS-7	
Depth (in)	PCB (mg/kg)
0-2	0.14
2-4	0.06
4-6	ND(0.06)
6-8	ND(0.06)
8-10	ND(0.06)
10-12	ND(0.06)
12-14	ND(0.06)
14-16	ND(0.06)
16-18	ND(0.06)
18-20	ND(0.06)
20-21	0.08
21-24	1.76
24-27	0.10
27-30	ND(0.08)

GRAPHIC SCALE
0 50' 100'

GRASSE RIVER STUDY AREA
MASSENA, NEW YORK

2003 THROUGH 2010
NEAR SHORE SAMPLING LOCATIONS
AND PCB RESULTS

FIGURE
1A

SEE FIGURE 1 FOR NOTES AND COMPLETE LEGEND INFORMATION